



Bulletin 1

COMBINED BRITISH WATERSKI NATIONAL CHAMPIONSHIPS

We are proud to have been selected to host the Championships again this year. It's going to be a mammoth task, but this announcement is a huge boost to our plans to raise the profile of water-skiing in the UK.

We look forward to welcoming back those that took part in the event last year and extend a warm welcome for those that are visiting us for the first time.

The Site

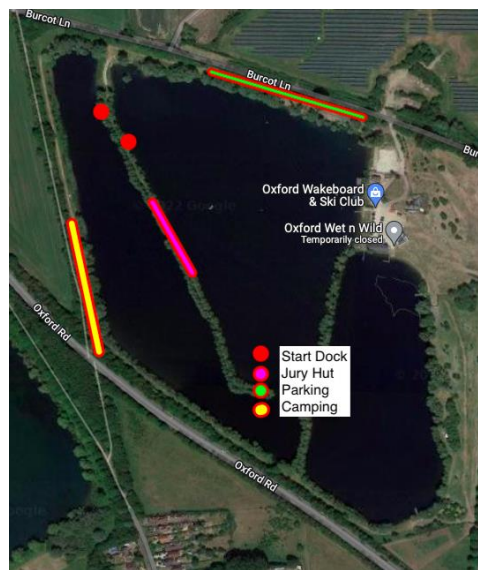
Oxford Wakeboard & Ski Club (OWSC) is a former gravel pit which had causeways added at a later date to give us two Slalom lakes and multiple options of where we can situate the ramp.



The general layout of the site is below and we ask you to respect our wishes not to have cars anywhere else but the car park. With the inclusion of the adaptive categories again this year, there will be some reserved parking.

We are sign posted off the main road and outside the gate. The postcode does bring you straight to the gate and the full address is: -

Oxford Wakeboard & Ski Club
Queenford Lakes
Burcot Lane
Berinsfield
OXON
OX10 7PQ



EMERGENCY ACCESS WILL BE THROUGH THE MAIN ENTRANCE AND FIRST AID POINT WILL BE LOCATED NEAR THE START JETTY

DATES

11th to 14th August 2022

ENTRY

Entries must be made online via the IWWF Event Management System (EMS). **The Competitions are now open for entries.**

QUALIFICATIONS

U10/U12 No qualifications required but if an U12 wants to jump they must have a registered score in a Competition at any time. This applies to other age categories and is a safety issue.

U14/U17/U21/Open No specific qualifications needed but must have a registered score at any time in the past for the events entered.

35+ No qualifications needed but must have a registered score at any time past for the events entered.

- Please note that both a British Competitors Licence and an IWWF Licence are required. -

The Jury Panel

TBC

Schedule

TBC

Numbers in Finals

16.4 NUMBERS IN FINALS

In all National championships, except where other specific rules are quoted, where a final round is included, the number going through to the final of an event is based on the number of skiers on the start list at Midday the day before the Competition

No. of skiers starting in the Preliminary round within an age category & Number in Finals

1 - 5	All
6 - 10	First 5
11 - 12	First 6
13 - 15	First 8
16 - 19	First 10
20 or more	First 12

To qualify for the Final Round a skier must ski and score more than zero in the Preliminary Round.

Note: see exceptions for Under 10, Under 12s under British Youth Championships and for 35+ under British 35+ Championships

Any skier qualifying for the finals and subsequently unable to take part will not be replaced by the next placed skier.

Please Note: Due to the high numbers of entries there will be no B Finals for 35+ Skiers.

Skiers Entering Age Category and Open Championships

Slalom – There will be only one preliminary round to determine the finalists for both Age Category and Open Events. The exception to this is for skiers who shorten at a different speed in their Age Category. They will ski in both Preliminary rounds.

Tricks and Jump - There will be only one preliminary round to determine the finalists for both Age Category and Open Events.

ENTRY FEES

Entry Fees remain unchanged at £50 per event and a £7.50 supplement if you enter your age cat and Open division

Please note:

With the uncertainty around rising gas prices a small surcharge may have to be added.

Payment to be made by BACS

Acc Name: OWSC Service LTD

S/C: 40-24-17

Acc Number: 92525844

PLEASE SEND CONFIRMATION TO bookings@oxfordwsc.com ONCE YOU HAVE PAID

OFFICIAL TOWBOAT

All official practice and tournament events will be pulled behind the Ski Nautique, equipped with the latest version of Zero Off speed control on one of the two lake we offer.

OFFICIAL PRACTICE

This can be booked by calling 07974 369982 and will be on 10th August. Additional practice is available that week. Practice sets are 6 passes for slalom and tricks and 4 jumps. They will be charged at £27.50. Please be aware that we can't guarantee which lake your age category will be on until closer to the time. On arrival, please report to reception to pay for any practice sets and your entry, if payment isn't confirmed by reception before your sets, then you will not be taken and sets will be chargeable.

TRADE VILLAGE

TBC

OFFICIAL HOTEL

TBC

CAMPING

Plenty of space has been set aside for camping but please drop us a message to confirm so that we can guarantee the space set aside is big enough.

ENTERTAINMENT

TBC

COMMUNICATION

To be able to keep in touch with all the competitors we will start a WhatsApp Group so we can keep you up to date with any schedule changes.